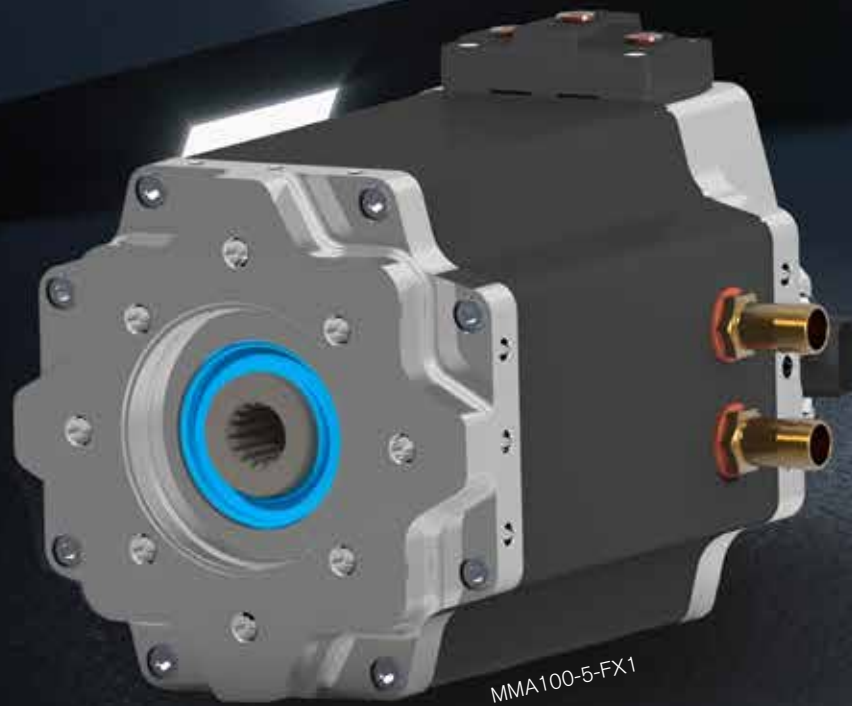


# ELECTRIC MOTORS FOR MOBILE APPLICATION

mo  
teg

ELECTRICAL  
DRIVE  
ENGINEERING

Part of Poclairn Group



## MMA 100 COMPACT and POWERFUL

- Variable speed permanent magnet motor
- High- and low-voltage
- Compact design & low weight
- Low noise & low vibration
- High power density & efficiency (motors with 94-96%)
- Liquid cooled (water/glycol or oil)
- Usable in on-/off-road and stationary applications
- Freely placeable within the vehicle & no maintenance

# MAXIMUM POWER IN SMALLEST DIMENSIONS



MOTEG electric motors have been developed specifically for use in mobile applications. They offer the best solution between power, size, weight, noise, efficiency and costs. Compared to standard asynchronous motors, our electric motors of the MMA-Series are significantly more compact and efficient. In combination with the new MOTEG HV- and LV-inverters of the Poclairn Group, they offer the optimum solution as „electro Mechanical Power Take Off (eMPTO)“ and to drive for example hydraulic pumps or fans used in commercial vehicles.

- High power and torque density
- Operation with frequency inverter ⇒ no DC/DC converter necessary
- Battery supply voltage (DC nominal): 48 V - 800 V
- Rotor position sensor (sin/cos-encoder)
- High voltage interlock (HVIL)
- Maximum torque over wide speed range
- Standard SAE and customized shafts, flanges and coolant connectors
- Standard automotive electrical connectors
- IP 67 protection class

Product Name	Motor power [kW]	Voltage [VAC/VDC]	Nom-/Max Speed [min <sup>-1</sup> ]	Nom-/Max Torque [Nm]	Nom-/Max Current [ARMS]	Size (LxBxH) [mm]	Weight [kg]
MMA 100-5-DH1	10,5 19,4	34/48 68/96	1500/6000 3000/6000	67/132 62/132	237/650	250 x 213 x 204	21,5
MMA 100-5-DA1	18,5	34/48	3000/6000	59/120	358/950	250 x 213 x 204	21,5
MMA 100-5-DK1	9,4	68/96	1500/6000	59/126	100/250	250 x 213 x 204	21,5
MMA 100-5-DN1	18,8	230/330	3000/6000	60/107	59/129	250 x 213 x 204	21,5
MMA 100-5-DO1	9,4	400/565	1500/6000	60/140	20/56	250 x 213 x 204	21,5
MMA 100-5-DC1	13,2 19,4	230/230 400/565	1500/6000 3000/6000	64/122 62/122	38/85	250 x 213 x 204	21,5
MMA 100-5-EG1	13,6 24,9	34/48 68/96	1500/6000 3000/6000	86/148 79/148	248/544	275 x 213 x 204	25
MMA 100-5-EA1	22,1	34/48	3000/6000	70/130	450/1140	275 x 213 x 204	25
MMA 100-5-EK1	12,5	68/96	1500/6000	80/129	130/276	275 x 213 x 204	25
MMA 100-5-EM1	25,1	230/330	3000/6000	80/138	77/176	275 x 213 x 204	25
MMA 100-5-EN1	12,5	400/565	1500/6000	80/130	22/47	275 x 213 x 204	25
MMA 100-5-EC1	13 25	230/230 400/565	1500/6000 3000/6000	83/150 79/150	53/111	275 x 213 x 204	25
MMA 100-5-FA1	16,5 30,1	34/48 68/96	1500/6000 3000/6000	105/173 96/173	364/630 368/630	300 x 213 x 204	28,7
MMA 100-5-FC1	24,8	34/48	3000/6000	79/160	450/1160	300 x 213 x 204	28,7
MMA 100-5-FL1	16,5	68/96	1500/6000	105/153	170/327	300 x 213 x 204	28,7
MMA 100-5-FN1	31,4	230/330	3000/6000	100/158	95/200	300 x 213 x 204	28,7
MMA 100-5-FO1	15,7	400/565	1500/6000	100/160	29/62	300 x 213 x 204	28,7
MMA 100-5-FE1	15,2 28,2	230/330 400/565	1500/6000 3000/6000	97/200 92/200	55/111	300 x 213 x 204	28,7
MMA 100-5-GI1	14,6 33,6	34/48 68/96	1500/6000 3000/6000	93/175 107/175	328/650 401/650	325 x 213 x 204	32,3
MMA 100-5-GO1	18,8	68/96	1500/6000	120/190	185/376	325 x 213 x 204	32,3
MMA 100-5-GB1	37,7	230/330	3000/6000	120/220	112/270	325 x 213 x 204	32,3
MMA 100-5-GR1	18,8	400/565	1500/6000	120/220	40/75	325 x 213 x 204	32,3
MMA 100-5-GF1	19 35,8	230/230 400/565	1500/6000 3000/6000	122/213 114/213	77/155	325 x 213 x 204	32,3